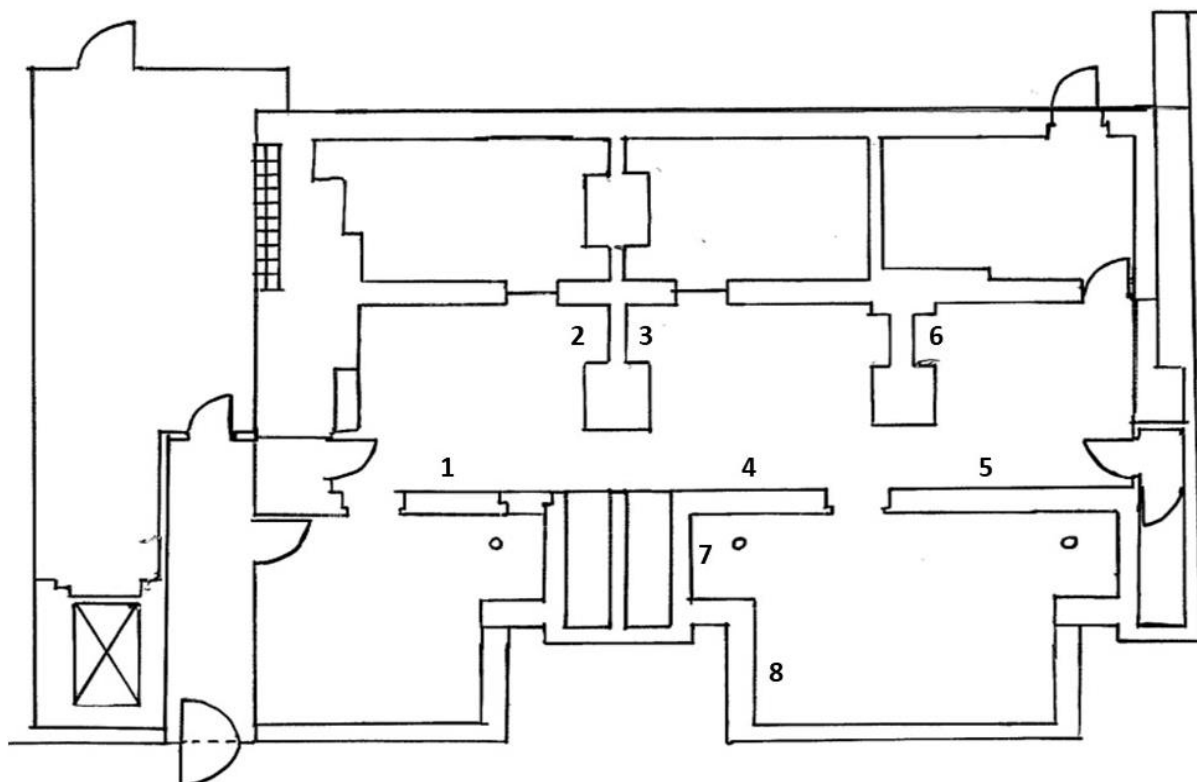


## Promise Me Tomorrow Exhibition Guide



### List of Works

1. **Exodus Crooks**, *Promise me tomorrow*, 2024, biodegradable artwork in collaboration with Holyhead School, Birmingham, H 81.3 x W 55.9 cm.
2. **Lillia**, *untitled*, 2024, cyanotype drawing, facilitated by artist Arpita Shah at Eastbourne Academy, H 42 x W 29.7 cm.
3. **Jakin**, *untitled*, 2024, cyanotype collage, facilitated by artist Arpita Shah at Eastbourne Academy, H 42 x W 29.7 cm.
4. CoLab Zines Shelf (L to R)

#### **Nowadays on Earth**

##### *Creative Mapping*

A zine for the Youth Rising Programme

2023

Millbank Academy

#### **Holly Graham and Nathalie Roset**

##### *Roots and Routes*

2022

Northbury Primary School, Eastbrook School and Young People's Creative Makerspace

**Fauziya Johnson and Kiara Mohamed Amin**

*Embodied Healing*

2023

Salford City Academy, Manchester

**Simone Yasmin, Will Jones and Boseda Olawoye**

*You Can't Ignore Us*

2023

Castleford Academy, Wakefield

**Arpita Shah, Misgana Berhane and Anne-Marie Watson**

*Blue Portal*

2024

Eastbourne Academy

**Exodus Crooks, Karen Dhlamini, Candice Nembhard and Dr. Susanne Boerner**

*Promise me tomorrow: notes on climate change and pedagogy*

2024

Holyhead School, Birmingham

**5. Fauziya Johnson and Kiara Mohamed Amin**

*In validated feelings we trust*

*Freely feeling is a way of being free*

*We are the future*

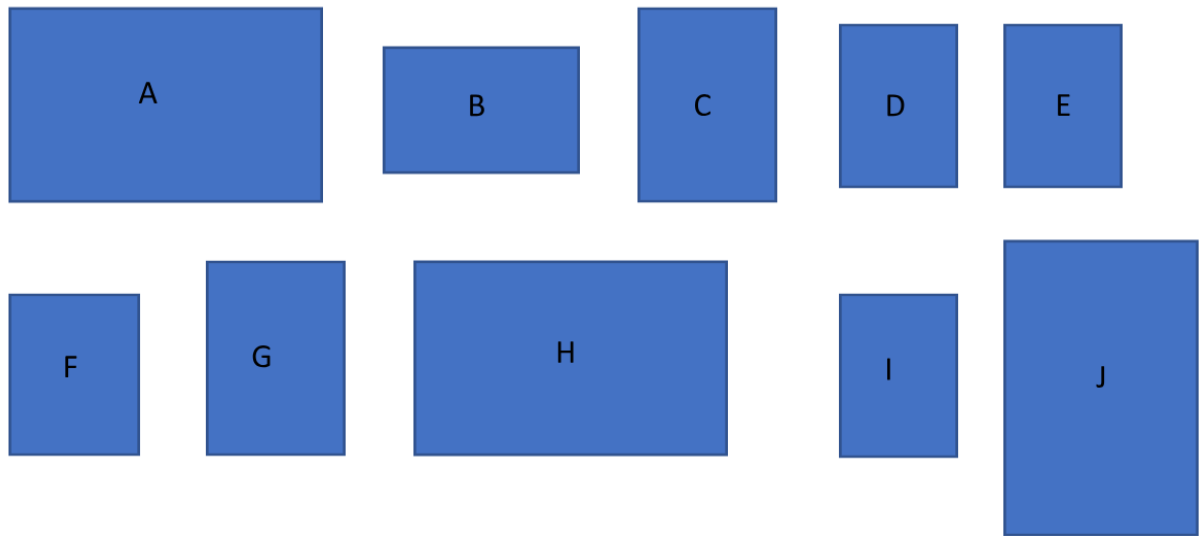
2022-2024

Posters from Embodied Healing zine made in response to working with students from Salford City Academy, Manchester, H 84.1 x W 59.4 cm.

**6. Muriel, untitled, 2024, cyanotype collage, facilitated by artist Arpita Shah at Eastbourne Academy, H 29.7 x W 42 cm.**

**7. Simone Yasmin and Will Jones, *You Can't Ignore Us*, 2023, learning and support for teachers and educators' film by Jules Lister, BSL interpreter Simon Bristoll. 6 minutes 7 seconds.**

8. Cyanotype portraits by students from Eastbourne Academy facilitated by artist, Arpita Shah, 2024.



- A. **Jakin**, *untitled*, H 29.7 x W 42 cm.
- B. **Jamil**, *untitled*, H 17.8 x W 25.4 cm.
- C. **Soénia**, *untitled*, H 29.7 x W 21 cm.
- D. **Jessica**, *untitled*, H 25.4 x W 17.8 cm.
- E. **Alyx**, *untitled*, H 25.4 x W 17.8 cm.
- F. **Evan**, *untitled*, H 25.4 x W 17.8 cm.
- G. **Enya**, *untitled*, H 29.7 x W 21 cm.
- H. **Muriel**, *untitled*, H 29.7 x W 42 cm.
- I. **Radu**, *untitled*, H 25.3 x W 17.8 cm.
- J. **Lillia**, *untitled*, H 42 x W 29.7 cm.